

Leakage Current

LCB-1010-B



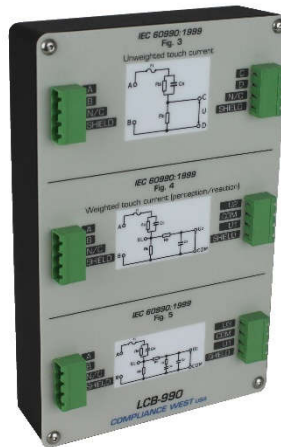
FAST



SAFE



RELIABLE



*Image for reference only



LCB-1010-B

Designed to provide a fast, safe and reliable method of measuring AC and DC currents: calibrated frequency response 20Hz to 1MHz. Designed and built in accordance with IEC 61010-1:2016, as well as in accordance with the requirements in IEC 61010-1:2016.

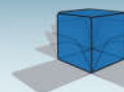


Features

- Provides networks for:
 - IEC 61010-1:2016 Fig. A.1
 - IEC 61010-1:2016 Fig. A.3
 - IEC 61010-1:2016 Fig. A.4
- Portable, lightweight
- Measures 4.5 x 7.4 x 2.4 in.
- No batteries or power required
- Custom test leads available
- Provided with NIST calibration; A2LA calibration available; 20 Hz-1Mhz
- One year warranty

www.compwest.com

(800) 748-6224



COMPLIANCE WEST USA
The blue box that tests. And tests.

Leakage Current

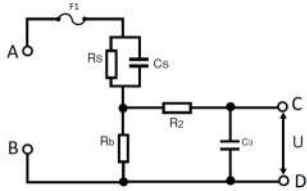
FAST

SAFE

RELIABLE

Instrument Configurations:

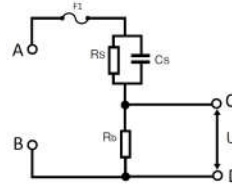
Config 1



Compliance to:

IEC 61010-1:2016 Fig. A.1

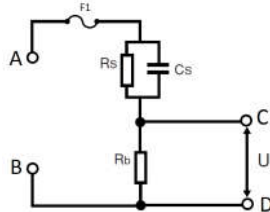
Config 2



Compliance to:

IEC 61010-1:2016 Fig. A.3

Config 3



Compliance to:

IEC 61010-1:2016 Fig A.4

Specifications

Input Voltage Rating:	0-265Vac, 0-300Vdc
Input Current Rating:	100 mAac, 100mAdc (fuse protected)
Frequency Response:	20Hz – 1MHz

Environmental

Operation Temperature:	15 - 40 °C
Relative Humidity Range:	0 - 90 % Non-Condensing

General

Dimensions:	4.5 in. Wide x 7.4 in. High x 2.4 in. Deep
Weight:	4.5 oz (125 gr)
Product Package:	LCB Leakage Current Product Manual Pluggable terminal blocks with input and output test leads NIST Traceable Calibration Certificate to ANSI Z540, 20Hz to 1Mhz

650 Gateway Center Way, Suite D. San Diego, CA 92102 USA
Toll Free: (800) 748-6224 Phone: (619) 878-9696

