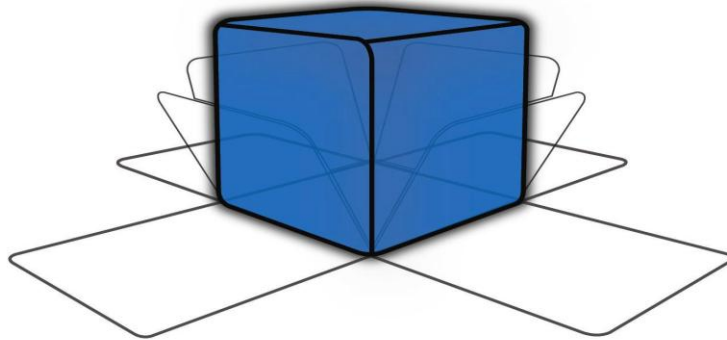


TestMinder MegaPulse
V1.2b
Multi-Pulse Test Software

Installation and Instruction Manual



COMPLIANCE
WEST_{USA}

Dear Customer:

Congratulations! Compliance West USA is proud to present you with the TestMinder MegaPulse Multi-Pulse Test Software Version 1.2b The installation and operating instructions are included in the Manual, so please retain this information for future use.

Thank you for your trust and confidence.

Rev. 1.2b March, 2011

Table of Contents

- TestMinder MegaPulse.....1
 - Description1
 - Test operation using TestMinder MegaPulse2
- Manual Operation from the Computer.....2
- Automatic Operation in Multi-Pulse Mode.....3
 - Technical Assistance5

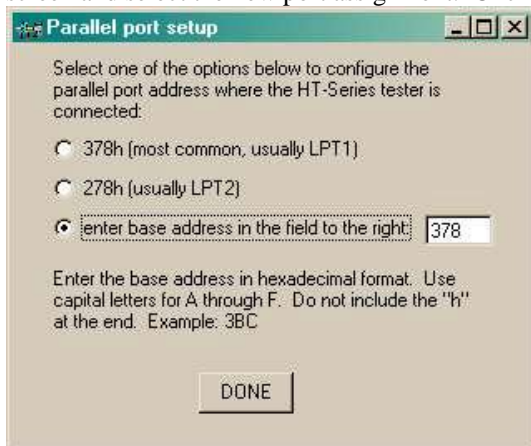
TestMinder MegaPulse

Description

The TestMinder MegaPulse is an option that allows testing to be started and stopped from a Windows-equipped computer. Multiple tests using the same output voltage a jacks can also be conducted. A record of the test is sent to a file on the computer. The record can be set to be a .txt file or a .csv file. The .csv file can be read by Microsoft Excel.

File Installation and Program Setup

1. Insert the CD “Compliance West USA TestMinder MegaPulse” into the drive on your computer and follow the prompts. If the CD does not start automatically, browse to the CD and click the file “Setup.exe.” The files will be installed to the location of your choice.
2. Browse to the CD again, and select the directory “DLPortIO”, click it, and run the installation program “Port95nt.exe”.
3. Using the computer’s Setup Utility, configure the parallel port to SPP or PS/2. This is important as some parallel port emulations will not allow proper operation of TestMinder MegaPulse. For detailed information on this step, please see the readme.txt file on the CD.
4. Further configuration of the parallel port is available on the TestMinder MegaPulse screen. For most cases, the default parallel port 378H (LPT 1) will be used. If this needs to be changed, click the LPT Setup button on the screen and select the new port assignment. Click DONE when finished.

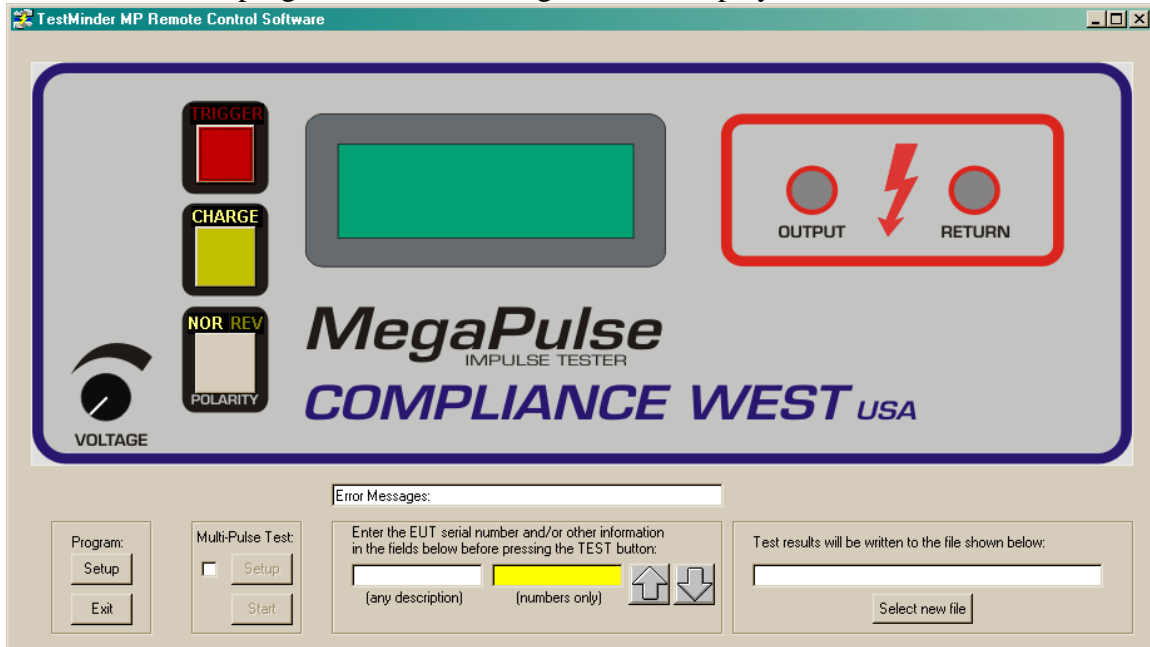


5. Connect the parallel port of the computer to the MegaPulse using the supplied parallel printer cable. Be sure to use the same computer LPT port specified in item 4 above.
6. Further operational assistance is available through the popup windows as the mouse is moved over the program window.

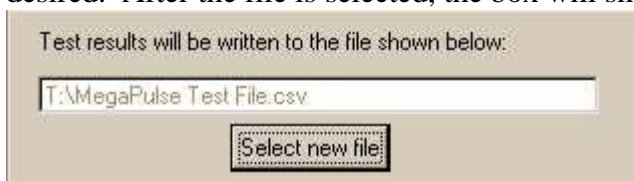
Test operation using TestMinder MegaPulse

Manual Operation from the Computer

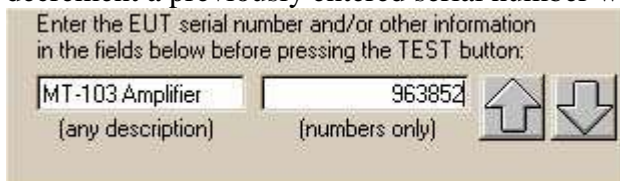
1. Click Start, Programs, TestMinder MP V1.2b, TestMinder MP V1.2b on the Windows main screen to start the program. The following screen is displayed.



2. The MegaPulse may be run in manual mode from the computer. To conduct a manual test, first enter a test result file in the window at the lower right hand part of the screen.
3. Click on “Select New File” to show the Open File dialog box. Select a file name and suffix. .txt and .csv files can be saved. .csv files can later be imported into Microsoft Excel if desired. After the file is selected, the box will show the file location:



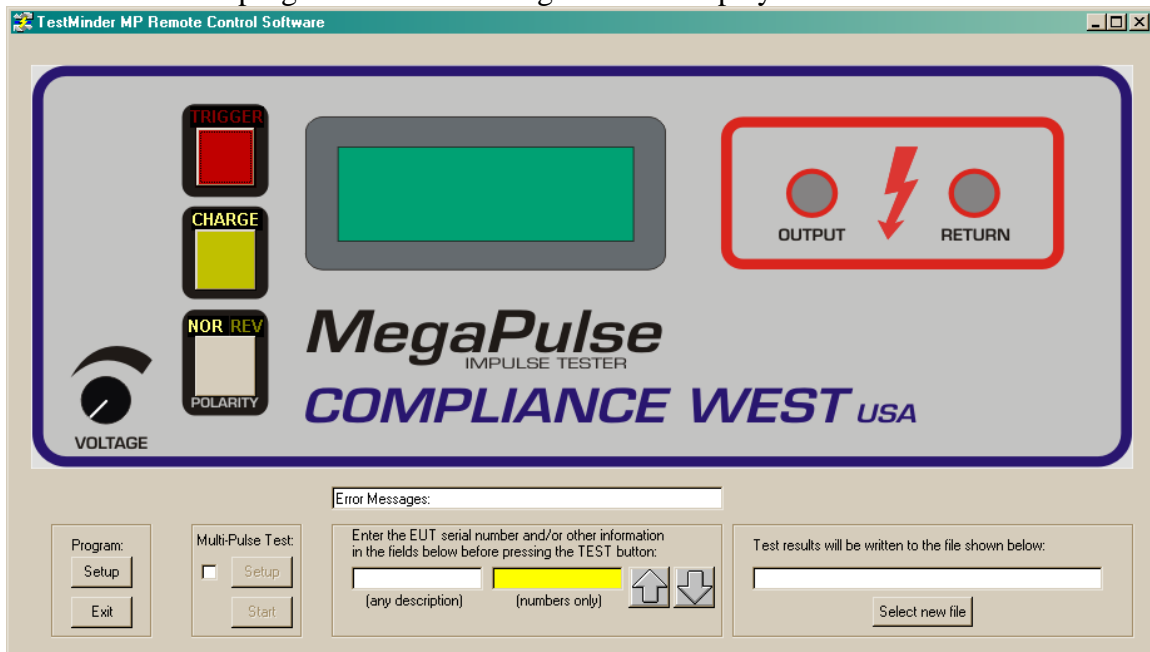
4. For reference, enter a description and/or Serial Number for the EUT can be entered in the lower center portion of the screen. The up and down arrows allow the user to increment or decrement a previously entered serial number without retyping.



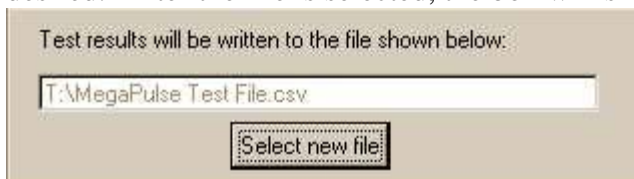
5. To conduct the test, select either positive or negative polarity by clicking on the Polarity button. As it is clicked, it alternates between Normal (positive) and Reverse (negative) polarity. Polarity selection must be entered before clicking on the Charge Button. After the Charge Button has been clicked, the Polarity button is disabled.
6. Press the Charge button. Make sure the voltage meter on the front panel reads the voltage desired.
7. Press the Trigger button to discharge the voltage into the EUT.

Automatic Operation in Multi-Pulse Mode

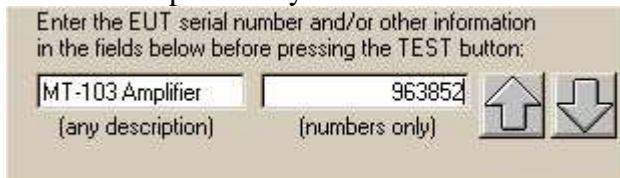
1. Click Start, Programs, TestMinder MP V1.2b, TestMinder MP V1.2b on the Windows main screen to start the program. The following screen is displayed.



2. The MegaPulse is run in multipulse mode only from the computer. To conduct an automatic test, first enter a test result file in the window at the lower right hand part of the screen.
3. Click on “Select New File” to show the Open File dialog box. Select a file name and suffix. .txt and .csv files can be saved. .csv files can later be imported into Microsoft Excel if desired. After the file is selected, the box will show the file location:



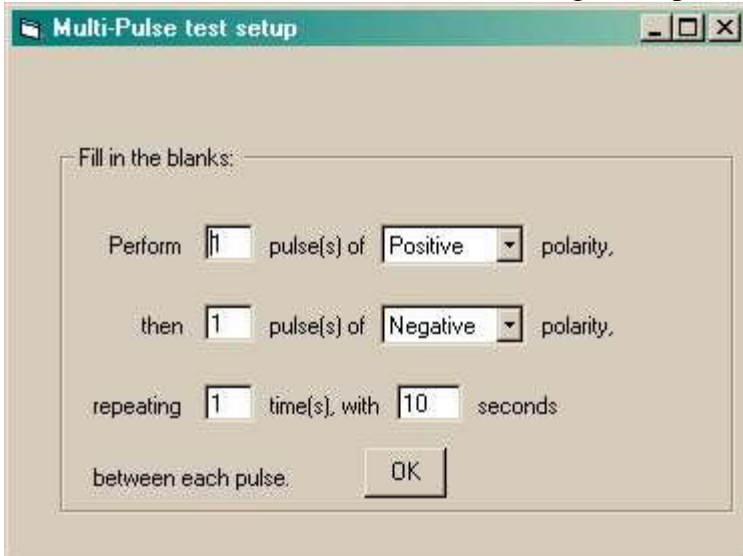
4. For reference, enter a description and/or Serial Number for the EUT can be entered in the lower center portion of the screen. The up and down arrows allow the user to increment or decrement a previously entered serial number without retyping.



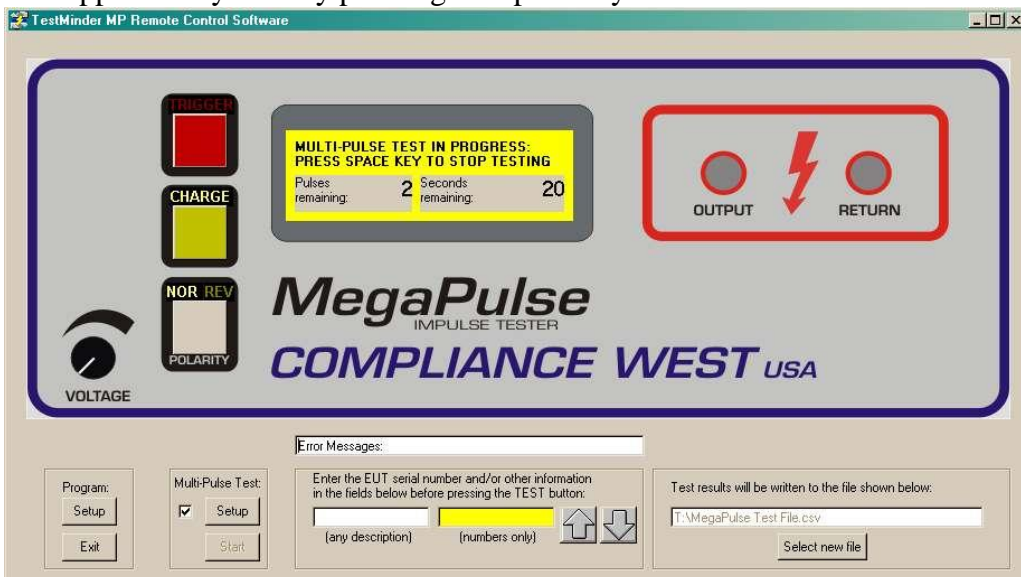
5. To set the number of pulses and repetition rate, first check the box in the “Multi-Pulse Test” box. Two buttons will become available; “Setup” and “Start”. Click on the “Setup” button.



- The setup screen is displayed. There is capability to define a test, defined as a number of repeating positive pulses followed by a number of negative pulses. This test can be repeated up to 99 times. NOTE: If negative pulses are required to be run first, click on the arrow, and the pulse polarity can be switched. NOTE: It is possible to set the repetition time faster than the charge time of the MegaPulse. Care must be taken to assure that time is allowed for the MegaPulse to reach full voltage on its front panel meter before the Trigger button is pressed, or the test will be conducted at a lower voltage than planned.



- After Multi-Pulse Test Parameters are correctly entered, click on the OK button to return to the TestMinder Main Screen.
- To conduct a Multi-Pulse test, click on the “Start” button in the Multi-Pulse Test box. The test commences immediately, and status is shown on the Main Screen. Note that the test can be stopped at any time by pressing the space key.



Section 2

Technical Assistance

For Technical Assistance

Phone: (800) 748-6224

Technical Assistance is available from Compliance West USA between the hours of 8:30 AM and 4:00 PM Pacific Time.

Compliance West USA

2120 Jimmy Durante Blvd., Suite 118

Del Mar, CA 92014

Phone: (858) 481-6454

FAX: (858) 481-6454